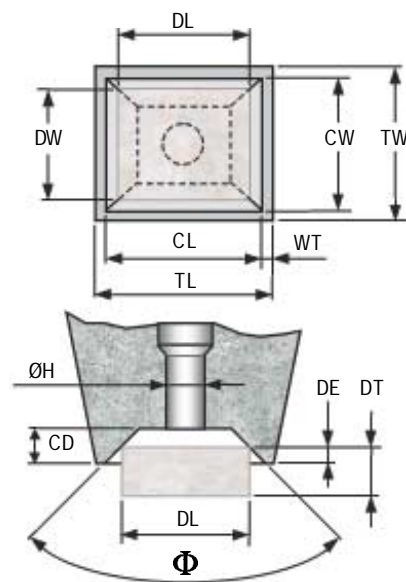
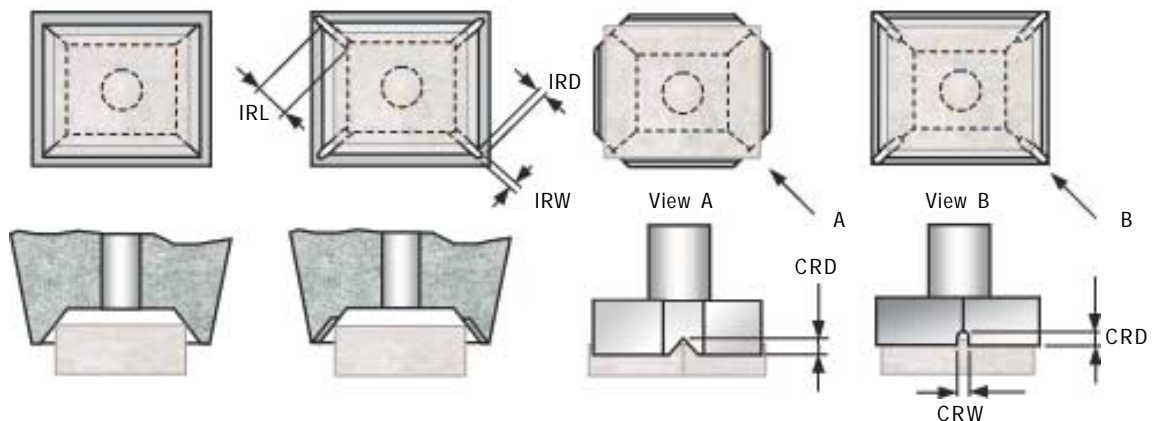


4 SIDED INVERTED PYRAMID DIE COLLET CONFIGURATION SELECTION

For each die size, SPT recommends a specific die collet configuration. However, those guidelines are very flexible and usually different configurations can successfully comply to the requirement of most common applications.

IP	IPIR	IPNC	IPCR
Inverted Pyramid	Inverted Pyramid Inner Relief Corner	Inverted Pyramid Notched Corner Relief	Inverted Pyramid Corner Relief
Die width < .020" / 0.50mm	Die width > .020" / 0.50mm to .100" / 2.54mm	Die width > .100" / 2.54mm	Die width > .035" / 0.90mm



REQUIRED DIMENSIONS TO SPECIFY

- Φ = Internal Cavity Angle
- DL = Die Length (Not necessarily the largest)
- DW = Die Width (Not necessarily the smallest)
- DT = Die Thickness

OTHER OPTIONAL DIMENSIONS

- DE = Die Engagement
- CL = Cavity Length
- CW = Cavity Width
- CD = Cavity Depth
- WT = Wall Thickness
- TL = Tool Length
- TW = Tool Width
- H = Hole Diameter
- CRD = Corner Relief Depth
- VR = Vertical Relief

DL is the die size when the shank is oriented as drawn in the shank page. Important for non -symmetric shanks

How To Order

	Shank Style & Length	Mat'l	Tip Config.	Dimensions DL - DW - DT - (DE)
EXAMPLE :	2143	- W	- IPNC120	.120 - .110 - .020 - .010
	2101-16	- W	- IPIR90	2.54 - 2.28 - 0.50 WT=0.120