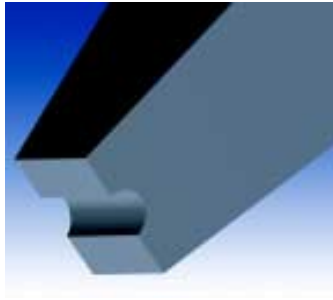
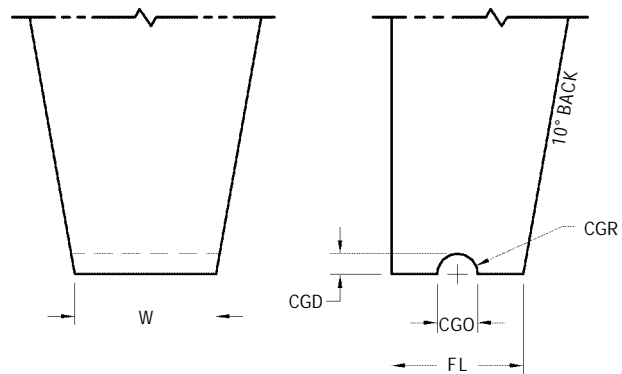


SPECIAL BONDING TOOLS



**1008A SIDE WIRE
BONDING WEDGE**



STANDARD DIMENSIONS

Tool Styles	Foot Length FL	Foot Width W	Cross Groove Depth CGD	Cross Groove Radius CGR	Useable Wire Diameter WD
	in / μm $\pm .0002/5$	in / μm $\pm .0002/5$	in / μm $\pm .0001/3$	in / μm $\pm .0001/3$	in / μm (Ref)
1008A	.0030 / 76	.0020 / 51 to .0040 / 102	.0005 / 13	.0005 / 13	.0010 / 25
1008A	.0035 / 89	.0020 / 51 to .0040 / 102	.0005 / 13	.0005 / 13	.0010 / 25
1008A	.0040 / 102	.0020 / 51 to .0040 / 102	.0005 / 13	.0005 / 13	.0010 / 25
1008A	.0045 / 114	.0020 / 51 to .0040 / 102	.0005 / 13	.0005 / 13	.0010 / 25
1008A	.0050 / 127	.0020 / 51 to .0040 / 102	.0005 / 13	.0005 / 13	.0010 / 25
1008A	.0060 / 152	.0020 / 51 to .0040 / 102	.0005 / 13	.0005 / 13	.0010 / 25
1008A	.0045 / 114	.0030 / 76 to .0050 / 127	.0008 / 19	.0008 / 19	.0015 / 38
1008A	.0050 / 127	.0030 / 76 to .0050 / 127	.0008 / 19	.0008 / 19	.0015 / 38
1008A	.0060 / 152	.0030 / 76 to .0050 / 127	.0008 / 19	.0008 / 19	.0015 / 38
1008A	.0070 / 178	.0030 / 76 to .0050 / 127	.0008 / 19	.0008 / 19	.0015 / 38
1008A	.0080 / 203	.0030 / 76 to .0050 / 127	.0008 / 19	.0008 / 19	.0015 / 38
1008A	.0060 / 152	.0040 / 102 to .0060 / 152	.0010 / 25	.0010 / 25	.0020 / 51
1008A	.0070 / 178	.0040 / 102 to .0060 / 152	.0010 / 25	.0010 / 25	.0020 / 51
1008A	.0080 / 203	.0040 / 102 to .0060 / 152	.0010 / 25	.0010 / 25	.0020 / 51
1008A	.0090 / 229	.0040 / 102 to .0060 / 152	.0010 / 25	.0010 / 25	.0020 / 51
1008A	.0100 / 254	.0040 / 102 to .0060 / 152	.0010 / 25	.0010 / 25	.0020 / 51

SPECIAL BONDING TOOLS - GENERAL GUIDELINES ON HOW TO ORDER

STYLE	
1008A	SIDE WIRE BONDING WEDGE STANDARD 10° BACK

	MATERIAL	FOOT LENGTH	TOOL LENGTH (TL)
TI	Titanium Carbide Composite for Gold Wire	Will rely on specific application requirements (wire diameter used, bond pad size) – see dimension Table	S = .437 / 11.1 mm
W	Tungsten Carbide Ultra Fine Grain for Aluminum Wire		$\frac{3}{4}$ = .750 / 19.05 mm L = .828 / 21.0 mm 1.00 = 1.00 / 25.4 mm Longer lengths are available consult Bonder manufacturer for specifications.

FOOT OPTIONS	
M	Matte finish on tip

HOW TO ORDER	
SPECIFY	Style – Material – Tool Diameter – Tool Length – Foot Design (Specify FL, W, CGD and CGR dimensions). For Special Shank Style refer to page 61.
EXAMPLE	1008A-W-1/16-L-M FL=.003, W = .004, CGD = CGR = .0005