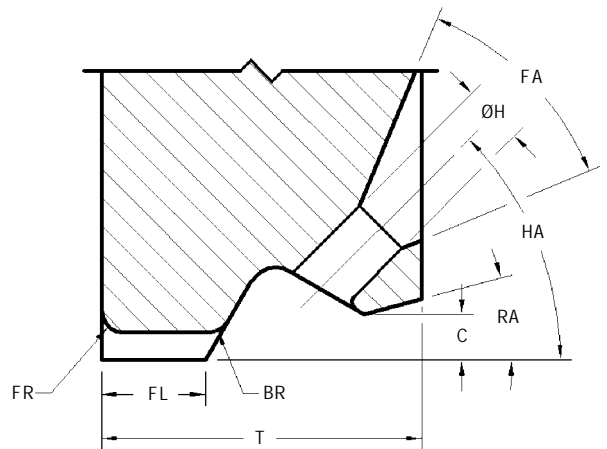
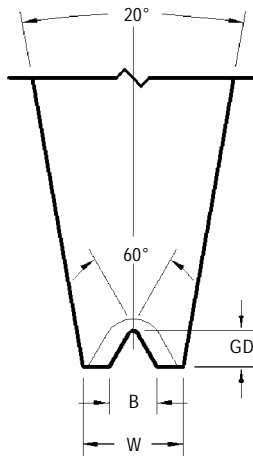
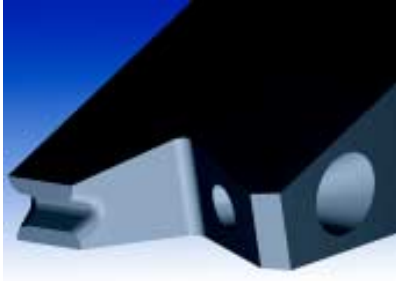


INLINE GROOVE NOTCH TOOLS

30D6 / 45D6 / 60D6STYLE



30D6 HA = 30°, FA = 45°, RA = 15°
 45D6 HA = 45°, FA = 45°, RA = 15°
 60D6 HA = 60°, FA = 30°, RA = 15°

STANDARD DIMENSIONS

Tool Styles	Wire Size	Useable Wire Diameter WD in / μm	Hole Diameter H in / μm $\pm .0005 / 13$	Foot Length FL in / μm $\pm .0005 / 13$	Front/Back Radius FR = BR in / μm (Ref)	Foot Width W in / μm $\pm .0005 / 13$	Clearance C in / μm (Ref)	30D6 Tip Length T in / μm $\pm .0010 / 25$	45/60D6 Tip Length T in / μm $\pm .0010 / 25$	Groove Depth GD in / μm Min	Groove Opening B in / μm $\pm .0003 / 18$
30D6 45D6 60D6	75	.0030 / 75	.0045 / 114	.0080 / 203	.0015 / 38	.0075 / 191	.0030 / 76	.0350 / 889	.0240 / 610	.0021 / 53	.0033 / 84
	100	.0040 / 100	.0060 / 152	.0105 / 267	.0020 / 51	.0100 / 254	.0030 / 76	.0390 / 991	.0350 / 889	.0028 / 71	.0044 / 112
	125	.0050 / 125	.0075 / 191	.0130 / 330	.0025 / 64	.0120 / 305	.0050 / 127	.0500 / 1270	.0400 / 1016	.0035 / 89	.0055 / 140
	150	.0060 / 150	.0900 / 229	.0155 / 394	.0030 / 76	.0140 / 356	.0050 / 127	.0590 / 1499	.0530 / 1346	.0042 / 107	.0066 / 168
	175	.0070 / 175	.0105 / 267	.0180 / 457	.0035 / 89	.0155 / 394	.0050 / 127	.0700 / 1778	.0560 / 1422	.0049 / 124	.0077 / 196
	200	.0080 / 200	.0120 / 305	.0205 / 521	.0040 / 102	.0175 / 445	.0080 / 203	.0790 / 2007	.0620 / 1575	.0056 / 142	.0088 / 224
			$\pm .0005 / 13$	$\pm .0005 / 13$	(Ref)	$\pm .0005 / 13$	(Ref)	$\pm .0010 / 25$	$\pm .0010 / 25$	Min	$\pm .0005 / 13$
	250	.0100 / 250	.0150 / 381	.0270 / 686	.0050 / 127	.0215 / 546	.0080 / 203	.0900 / 2286	.0790 / 2007	.0070 / 178	.0110 / 279

INLINE GROOVE NOTCH TOOLS - GENERAL GUIDELINES ON HOW TO ORDER

STYLE		FEED ANGLE
30D6	Inline and 60° "V" Groove	30°
45D6		45°
60D6		60°

WIRE SIZE	MATERIAL
Specify Wire Size	W: Tungsten Carbide Ultra Fine Grain for Aluminum Wire

Tool Dia	TD in / mm ±.0001"/3µm	TDF in / mm ±.0005"/13µm	Specified Length	TL in / mm ±.005"/130µm
1/16	.0624 / 1.585	.0570 / 1.448 *	3/4	.750 / 19.05
1/8	.1249 / 3.172	.0937 / 2.378 ***	L	.828 / 21.0
2mm	.0785 / 1.995 @	.0630 / 1.600 *	1.00	1.000 / 25.4
3mm	.1180 / 2.997	.0985 / 2.502 **	30mm	1.181 / 30.0

NOTE	
*	limited size availability.
**	.110" / 2.79mm TDF supplied if required by foot geometry.
***	.1180" / 3.00mm TDF supplied if required by foot geometry.
@	Tolerance +0 / - .0002" / 5µm

FOOT OPTIONS	
G	The FR and BR are polished and a fine matte finish is within the area of the groove. (Standard)
GM	The FR, BR and groove have a matte finish

HOW TO ORDER	
SPECIFY	Style - Wire - Material - Tool Diameter - Tool Length - Foot Option (For modifications to standard tools, use part number and specify modified dimensions or contact our technical support staff for assistance with your requirements). For Shank Style refer to page 62.
EXAMPLE	45D6 - 250 - W - 1/8 - 1.00 - G 30D6 - 150 - W - 3mm - 30mm - G 60D6 - 200 - W - 1/8 - 1.00 - GM