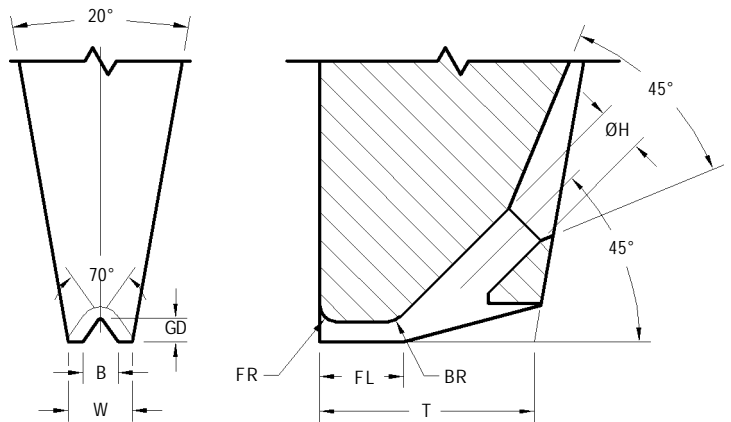
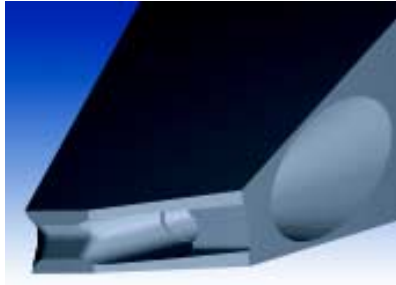


INLINE GROOVE AUTOBONDING TOOLS

45CK STYLE



STANDARD DIMENSIONS

Tool Styles - Wire Size	Useable Wire Diameter WD in / μm	Hole Diameter in / μm $\pm .0005/13$	Foot Length FL in / μm $\pm .0005/13$	Front/Back Radius FR = BR in / μm (Ref)	Foot Width W in / μm $\pm .0005/13$	Tip Length T in / μm $\pm .0010/25$	Groove Depth GD in / μm Min	Groove Opening B in / μm $\pm .0003/18$
45CK-75	.0030 / 75	.0055 / 140	.0070 / 178	.0015 / 38	.0070 / 178	.0270 / 686	.0018 / 46	.0032 / 81
45CK-100	.0040 / 100	.0059 / 150	.0073 / 185	.0020 / 51	.0079 / 200	.0290 / 737	.0026 / 65	.0043 / 110
45CK-125	.0050 / 125	.0074 / 188	.0086 / 219	.0025 / 64	.0098 / 250	.0340 / 864	.0032 / 81	.0054 / 137
45CK-150	.0060 / 150	.0089 / 226	.0100 / 254	.0030 / 76	.0118 / 300	.0400 / 1016	.0038 / 97	.0065 / 165
45CK-175	.0070 / 175	.0103 / 262	.0105 / 267	.0035 / 89	.0138 / 350	.0470 / 1194	.0045 / 114	.0076 / 193
45CK-200	.0080 / 200	.0118 / 300	.0106 / 270	.0039 / 100	.0157 / 400	.0540 / 1372	.0051 / 130	.0087 / 221
		$\pm .0005/13$	$\pm .0005/13$	(Ref)	$\pm .0005/13$	$\pm .0010/25$	Min	$\pm .0005/13$
45CK-250	.0100 / 250	.0148 / 376	.0133 / 338	.0046 / 125	.0197 / 500	.0063 / 1600	.0064 / 163	.0108 / 274

INLINE GROOVE AUTOBONDING TOOLS - GENERAL GUIDELINES ON HOW TO ORDER

STYLE	FEED ANGLE
45CK : Inline and 70° "V" Groove	45° 60° wire feed available with slimline

WIRE SIZE	MATERIAL
Specify Wire Size	W : Tungsten Carbide Ultra Fine Grain for Aluminum Wire

Tool Dia	TD in / mm ±.0001"/13µm	TDF in / mm ±.0005"/13µm	Specified Length	TL in / mm ±.005"/130µm
1/16	.0624 / 1.585	.0570 / 1.448 *	L	.828 / 21.0
1/8	.1249 / 3.172	.0937 / 2.378 ***	1.00	1.000 / 25.4
2mm	.0785 / 1.995 @	.0630 / 1.600 *	20mm	.787 / 20.0
3mm	.1180 / 2.997	.0985 / 2.502 **	29mm	1.142 / 29.0

NOTE	
*	limited size availability.
**	.110" / 2.79mm TDF supplied if required by foot geometry.
***	.1180" / 3.00mm TDF supplied if required by foot geometry.
@	Tolerance +0 / - .0002" / 5µm

FOOT OPTIONS	
G	The FR and BR are polished and a fine matte finish is within the area of the groove. (Standard)
GM	The FR, BR and groove have a matte finish

HOW TO ORDER	
SPECIFY	Style - Wire - Material - Tool Diameter - Tool Length - Foot Option (For modifications to standard tools, use part number and specify modified dimensions or contact our technical support staff for assistance with your requirements). For Shank Style refer to page 62.
EXAMPLE	45CK - 200 - W - 2mm - 29mm - G

LARGE WIRE
BONDING TOOLS