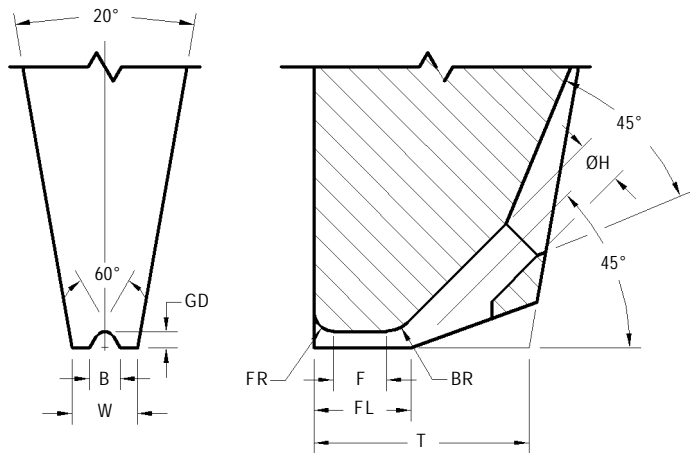
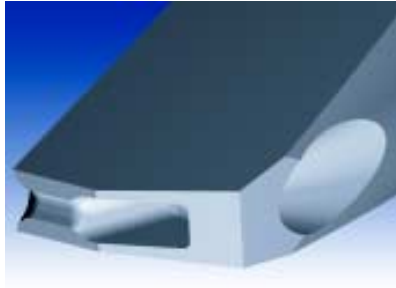


INLINE GROOVE AUTOBONDING TOOLS

AB16 STYLE



STANDARD DIMENSIONS

Tool Styles - Wire Size / Foot Size	Useable Wire Diameter WD in / μm	Hole Diameter H in / μm $\pm .0005/13$	Foot Length FL in / μm $\pm .0005/13$	Front Radius FR in / μm $\pm .0005/13$	Back Radius BR in / μm $\pm .0005/13$	Flat F in / μm (Ref)	Foot Width W in / μm $\pm .0005/13$	Tip Length T in / μm $\pm .0010/25$	Groove Depth GD in / μm $\pm .0002/5$	Groove Opening B in / μm $\pm .0005/13$
AB16-3XS	.0030 / 75	.0055 / 140	.0039 / 99	.0024 / 61	.0036 / 91	.0015 / 38	.0075 / 191	.0220 / 559	.0015 / 38	.0033 / 84
AB16-3S	.0030 / 75	.0055 / 140	.0049 / 124	.0024 / 61	.0036 / 91	.0025 / 64	.0075 / 191	.0230 / 584	.0015 / 38	.0033 / 84
AB16-3R	.0030 / 75	.0055 / 140	.0059 / 150	.0024 / 61	.0036 / 91	.0035 / 89	.0075 / 191	.0240 / 610	.0015 / 38	.0033 / 84
AB16-3L	.0030 / 75	.0055 / 140	.0069 / 175	.0024 / 61	.0036 / 91	.0045 / 114	.0075 / 191	.0250 / 635	.0015 / 38	.0033 / 84
AB16-4S	.0040 / 100	.0070 / 178	.0064 / 163	.0032 / 81	.0048 / 122	.0030 / 76	.0100 / 254	.0300 / 762	.0020 / 51	.0044 / 112
AB16-4R	.0040 / 100	.0070 / 178	.0084 / 213	.0032 / 81	.0048 / 122	.0050 / 127	.0100 / 254	.0320 / 813	.0020 / 51	.0044 / 112
AB16-4L	.0040 / 100	.0070 / 178	.0094 / 239	.0032 / 81	.0048 / 122	.0060 / 152	.0100 / 254	.0330 / 838	.0020 / 51	.0044 / 112
AB16-5S	.0050 / 125	.0090 / 229	.0080 / 203	.0040 / 102	.0060 / 152	.0040 / 102	.0125 / 318	.0380 / 965	.0025 / 64	.0055 / 140
AB16-5R	.0050 / 125	.0090 / 229	.0100 / 254	.0040 / 102	.0060 / 152	.0060 / 152	.0125 / 318	.0400 / 1016	.0025 / 64	.0055 / 140
AB16-5L	.0050 / 125	.0090 / 229	.0115 / 292	.0040 / 102	.0060 / 152	.0075 / 191	.0125 / 318	.0410 / 1041	.0025 / 64	.0055 / 140
AB16-8S	.0080 / 200	.0145 / 368	.0130 / 330	.0064 / 163	.0096 / 244	.0065 / 165	.0200 / 508	.0610 / 1549	.0040 / 102	.0088 / 224
AB16-8R	.0080 / 200	.0145 / 368	.0160 / 406	.0064 / 163	.0096 / 244	.0095 / 241	.0200 / 508	.0640 / 1626	.0040 / 102	.0088 / 224
AB16-8L	.0080 / 200	.0145 / 368	.0185 / 470	.0064 / 163	.0096 / 244	.0120 / 305	.0200 / 508	.0670 / 1702	.0040 / 102	.0088 / 224
		$\pm .0005/13$	$\pm .0005/13$	$\pm .0010/25$	$\pm .0010/25$	(Ref)	$\pm .0010/25$	$\pm .0010/25$	$\pm .0003/8$	$\pm .0006/15$
AB16-10S	.0100 / 250	.0180 / 457	.0160 / 406	.0080 / 203	.0120 / 305	.0080 / 203	.0080 / 203	.0760 / 1930	.0050 / 127	.0110 / 279
AB16-10R	.0100 / 250	.0180 / 457	.0200 / 508	.0080 / 203	.0120 / 305	.0120 / 305	.0120 / 305	.0800 / 2032	.0050 / 127	.0110 / 279
AB16-10L	.0100 / 250	.0180 / 457	.0230 / 584	.0080 / 203	.0120 / 305	.0150 / 381	.0150 / 381	.0830 / 2108	.0050 / 127	.0110 / 279

INLINE GROOVE AUTOBONDING TOOLS - GENERAL GUIDELINES ON HOW TO ORDER

STYLE		FEED ANGLE
AB16	Inline and 60° "V" Groove	45° 60° wire feed available with slimline

WIRE SIZE	MATERIAL
Specify Wire Size	W : Tungsten Carbide Ultra Fine Grain for Aluminum Wire

Tool Dia	TD in / mm ±.0001"/3µm	TDF in / mm ±.0005"/13µm	Specified Length	TL in / mm ±.005"/130µm
1/16	.0624 / 1.585	.0570 / 1.448 *	3/4	.750 / 19.05
1/8	.1249 / 3.172	.0937 / 2.378 ***	L	.828 / 21.0
2mm	.0785 / 1.995 @	.0630 / 1.600 *	1.00	1.000 / 25.4
3mm	.1180 / 2.997	.0985 / 2.502 **	30mm	1.181 / 30.0

NOTE	
*	limited size availability.
**	.110" / 2.79mm TDF supplied if required by foot geometry.
***	.1180" / 3.00mm TDF supplied if required by foot geometry.
@	Tolerance +0 / - .0002" / 5µm

FOOT OPTIONS	
G	The FR and BR are polished and a fine matte finish is within the area of the groove. (Standard)
GM	The FR, BR and groove have a matte finish

HOW TO ORDER	
SPECIFY	Style - Wire / Foot Size - Material - Tool Diameter - Tool Length - Foot Option (For modifications to standard tools, use part number and specify modified dimensions or contact our technical support staff for assistance with your requirements). For Shank Style refer to page 62.
EXAMPLE	AB16 - 5R - W - 3mm - L - GM AB16 - 8L - W - 1/8 - L - G