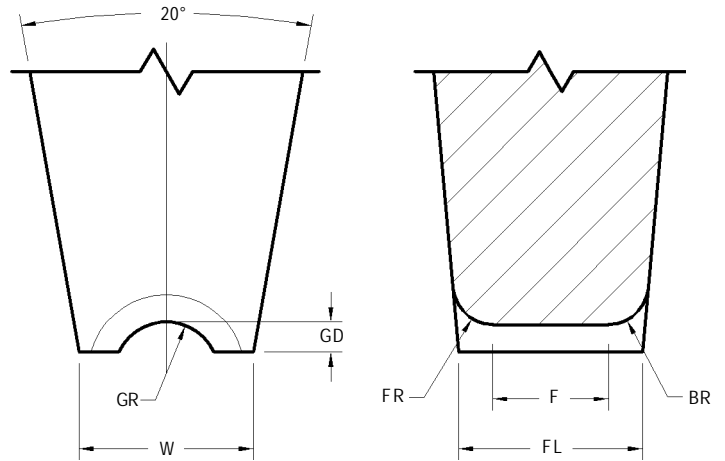
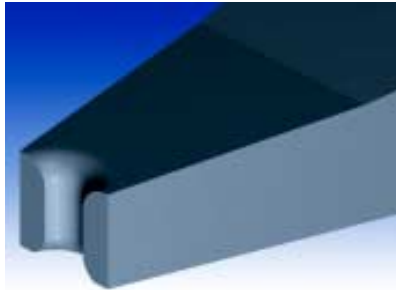


## INLINE GROOVE NO-HOLE TOOLS

### CK STYLE



STANDARD DIMENSIONS

Tool Styles - Wire Size	Useable Wire Diameter WD in / $\mu\text{m}$	Foot Length FL in / $\mu\text{m}$ $\pm .0005/13$	Front/Back Radius FR = BR in / $\mu\text{m}$ $\pm .0005/13$	Flat F in / $\mu\text{m}$ (Ref)	Foot Width W in / $\mu\text{m}$ $\pm .0005/13$	Groove Depth GD in / $\mu\text{m}$ $\pm .0002/5$	Groove Radius GR in / $\mu\text{m}$ $\pm .0002/5$
CK-75	.0030 / 75	.0065 / 165	.0018 / 46	.0030 / 76	.0075 / 191	.0010 / 25	.0018 / 46
CK-100	.0040 / 100	.0090 / 229	.0024 / 61	.0039 / 99	.0100 / 254	.0014 / 36	.0024 / 61
CK-125	.0050 / 125	.0110 / 279	.0030 / 76	.0049 / 124	.0120 / 305	.0017 / 43	.0030 / 76
CK-150	.0060 / 150	.0130 / 330	.0035 / 89	.0059 / 150	.0150 / 381	.0021 / 53	.0035 / 89
CK-175	.0070 / 175	.0150 / 381	.0041 / 104	.0069 / 175	.0170 / 432	.0024 / 61	.0041 / 104
CK-200	.0080 / 200	.0170 / 432	.0047 / 119	.0079 / 201	.0200 / 508	.0028 / 71	.0047 / 119

## INLINE GROOVE NO-HOLE TOOLS - GENERAL GUIDELINES ON HOW TO ORDER

STYLE		WIRE SIZE	MATERIAL
<b>CK :</b>	Inline Groove	Specify Wire Size	<b>W :</b> Tungsten Carbide Ultra Fine Grain for Aluminum Wire

Tool Dia	TD in / mm ±.0001"/3µm	TDF in / mm ±.0005"/13µm	Specified Length	TL in / mm ±.005"/130µm
1/16	.0624 / 1.585	.0570 / 1.448 *	L	.828 / 21.0
1/8	.1249 / 3.172	.0937 / 2.378 ***	1.00	1.000 / 25.4
2mm	.0785 / 1.995 @	.0630 / 1.600 *	20mm	.787 / 20.0
3mm	.1180 / 2.997	.0985 / 2.502 **	29mm	1.142 / 29.0

NOTE	
*	limited size availability.
**	.110" / 2.79mm TDF supplied if required by foot geometry.
***	.1180" / 3.00mm TDF supplied if required by foot geometry.
@	Tolerance +0 / - .0002" / 5µm

FOOT OPTIONS	
<b>G</b>	The FR and BR are polished and a fine matte finish is within the area of the groove. (Standard)
<b>GM</b>	The FR, BR and groove have a matte finish

HOW TO ORDER	
<b>SPECIFY</b>	<b>Style - Wire - Material - Tool Diameter - Tool Length - Foot Option</b> (For modifications to standard tools, use part number and specify modified dimensions or contact our technical support staff for assistance with your requirements). For Shank Style refer to page 62.
<b>EXAMPLE</b>	CK - 200 - W - 2mm - 29mm - G CK - 150 - W - 2mm - 29mm - GM CK - 200 - W - 3mm - 20mm - G