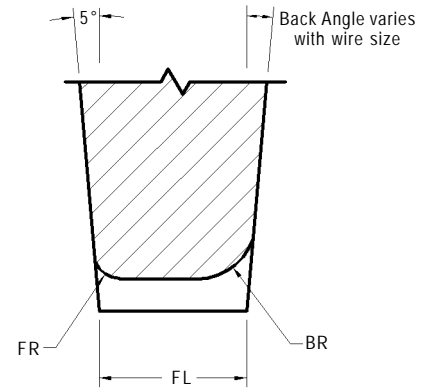
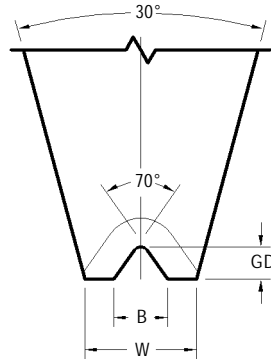
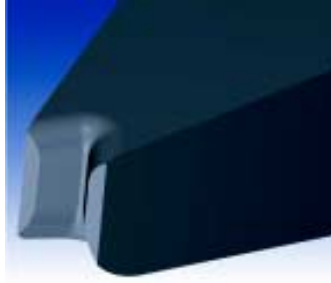


# INLINE GROOVE NO-HOLE TOOLS

## OSG7 STYLE



### STANDARD DIMENSIONS

Tool Styles - Wire Size	Useable Wire Diameter WD in / $\mu\text{m}$	Foot Length FL in / $\mu\text{m}$ $\pm .0005/13$	Front Radius FR in / $\mu\text{m}$ (Ref)	Back Radius BR in / $\mu\text{m}$ (Ref)	Foot Width W in / $\mu\text{m}$ $\pm .0005/13$	Groove Depth GD in / $\mu\text{m}$ Min	Groove Opening B in / $\mu\text{m}$ $\pm .0003/8$
OSG7-100	.0040 / 100	.0114 / 290	.0027 / 69	.0054 / 137	.0080 / 200	.0027 / 69	.0046 / 117
OSG7-125	.0050 / 125	.0142 / 361	.0034 / 86	.0068 / 173	.0100 / 254	.0034 / 86	.0057 / 145
OSG7-150	.0060 / 150	.0170 / 432	.0041 / 104	.0082 / 208	.0120 / 305	.0040 / 102	.0068 / 173
OSG7-175	.0070 / 175	.0199 / 505	.0048 / 122	.0096 / 244	.0140 / 356	.0048 / 122	.0080 / 203
OSG7-200	.0080 / 200	.0226 / 574	.0054 / 137	.0109 / 277	.0160 / 406	.0055 / 140	.0091 / 231
		$\pm .0005/13$	(Ref)	(Ref)	$\pm .0005/13$	Min (75%)	$\pm .0005/13$
OSG7-250	.0100 / 250	.0283 / 719	.0068 / 173	.0136 / 345	.0200 / 508	.0075 / 191	.0122 / 310
OSG7-300	.0120 / 300	.0340 / 864	.0082 / 208	.0163 / 414	.0240 / 610	.0090 / 229	.0146 / 371
OSG7-350	.0140 / 356	.0396 / 1006	.0095 / 241	.0190 / 483	.0280 / 711	.0105 / 267	.0171 / 434
OSG7-380	.0150 / 381	.0425 / 1080	.0102 / 259	.0204 / 518	.0300 / 762	.0113 / 287	.0183 / 465
OSG7-400	.0160 / 400	.0440 / 1118	.0106 / 269	.0211 / 536	.0320 / 813	.0118 / 300	.0195 / 495
OSG7-450	.0180 / 450	.0510 / 1295	.0122 / 310	.0245 / 622	.0363 / 922	.0140 / 356	.0220 / 559
OSG7-500	.0200 / 500	.0566 / 1438	.0136 / 345	.0272 / 691	.0400 / 1016	.0150 / 381	.0244 / 620

## INLINE GROOVE NO-HOLE TOOLS - GENERAL GUIDELINES ON HOW TO ORDER

STYLE	WIRE SIZE	MATERIAL
<b>OSG7 :</b> 70° Deep "V" Groove	Specify Wire Size	<b>W :</b> Tungsten Carbide Ultra Fine Grain for Aluminum Wire

Tool Dia	TD in / mm ±.0001"/13µm	TDF in / mm ±.0005"/13µm	Specified Length	TL in / mm ±.005"/130µm
1/8	.1249 / 3.172	.0937 / 2.378	1.00	1.06 / 26.9
1/8	.1249 / 3.172	.110 / 2.794	64mm	2.505 / 63.63

FOOT OPTIONS	
<b>G</b>	The FR and BR are polished and a fine matte finish is within the area of the groove. (Standard)
<b>GM</b>	The FR, BR and groove have a matte finish

HOW TO ORDER	
<b>SPECIFY</b>	<b>Style - Wire - Material - Tool Diameter - Tool Length - Foot Option</b> (For modifications to standard tools, use part number and specify modified dimensions or contact our technical support staff for assistance with your requirements). For Shank Style refer to page 62.
<b>EXAMPLE</b>	OSG7 - 250 - W - 1/8 - 64mm - G OSG7 - 350 - W - 1/8 - 64mm - GM