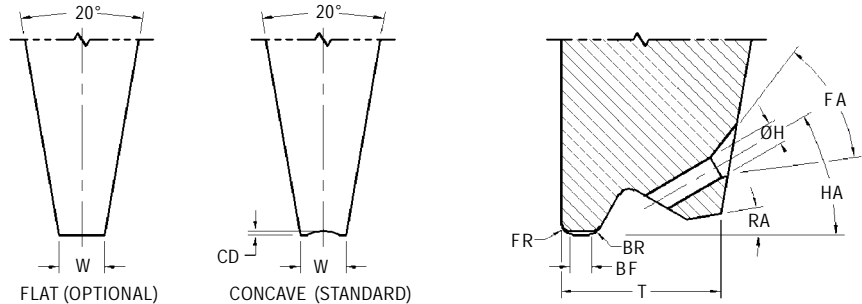
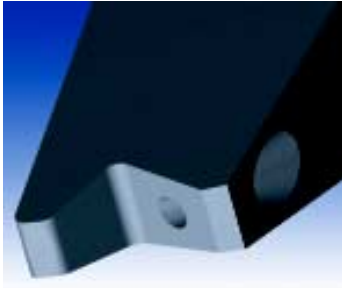


STANDARD BONDING TOOL SERIES

The standard 10° back bonding wedge is designed for use with aluminum wire in all conventional manual bonding machines. The notched tip minimizes wire drag during the looping formation preventing heel cracks and broken wires.



- 1001 HA = 30°, FA = 45°, RA = 15°
- 1002 HA = 45°, FA = 45°, RA = 15°
- 1110 HA = 60°, FA = 30°, RA = 20°

STANDARD DIMENSIONS

Tool Styles	Hole / Bond Flat	Hole H	Bond Flat BF	Front Radius FR	Back Radius BR	Foot Width W	Foot Width W	Tip Thickness T	Tip Thickness T	Tip Thickness T	Useable Wire Diameter in / μm
		in / μm ±.0002/5	in / μm ±.0002/5	in / μm ±.0001/3	in / μm ±.0001/3	1001, 1002 in / μm ±.0002/5	1110 in / μm ±.0002/5	1001 in / μm ±.0005/13	1002 in / μm ±.0005/13	1110 in / μm ±.0005/13	
1001A	2020	.0020 / 51	.0020 / 51	.0010 / 25	.0010 / 25	.0040 / 102	.0065 / 165	.0150 / 381	.0140 / 356	.0120 / 305	.0007 / 18 through .0013 / 33
	2025	.0020 / 51	.0025 / 64	.0010 / 25	.0010 / 25	.0040 / 102	.0065 / 165	.0150 / 381	.0140 / 356	.0120 / 305	
	2030	.0020 / 51	.0030 / 76	.0010 / 25	.0010 / 25	.0040 / 102	.0065 / 165	.0150 / 381	.0140 / 356	.0140 / 356	
	2515	.0025 / 64	.0015 / 38	.0010 / 25	.0010 / 25	.0040 / 102	.0065 / 165	.0150 / 381	.0140 / 356	.0120 / 305	
	2520	.0025 / 64	.0020 / 51	.0010 / 25	.0010 / 25	.0040 / 102	.0065 / 165	.0150 / 381	.0140 / 356	.0120 / 305	
1002A	2525	.0025 / 64	.0025 / 64	.0010 / 25	.0010 / 25	.0040 / 102	.0065 / 165	.0150 / 381	.0140 / 356	.0120 / 305	.0010 / 25 through .0015 / 38
	2530	.0025 / 64	.0030 / 76	.0010 / 25	.0010 / 25	.0040 / 102	.0065 / 165	.0150 / 381	.0140 / 356	.0140 / 356	
1110A	2535	.0025 / 64	.0035 / 89	.0015 / 38	.0010 / 25	.0050 / 127	.0065 / 165	.0180 / 457	.0150 / 381	.0140 / 356	.0015 / 38 through .0017 / 40
	2540	.0025 / 64	.0040 / 102	.0015 / 38	.0010 / 25	.0050 / 127	.0065 / 165	.0180 / 457	.0150 / 381	.0140 / 356	
	3020	.0030 / 76	.0020 / 51	.0015 / 38	.0015 / 38	.0050 / 127	.0065 / 165	.0200 / 508	.0180 / 457	.0180 / 457	
	3025	.0030 / 76	.0025 / 64	.0015 / 38	.0015 / 38	.0050 / 127	.0065 / 165	.0200 / 508	.0180 / 457	.0180 / 457	
	3030	.0030 / 76	.0030 / 76	.0015 / 38	.0015 / 38	.0050 / 127	.0065 / 165	.0200 / 508	.0180 / 457	.0180 / 457	
1001B	3035	.0030 / 76	.0035 / 89	.0015 / 38	.0015 / 38	.0050 / 127	.0065 / 165	.0200 / 508	.0180 / 457	.0180 / 457	.0007 / 18 through .0013 / 33
	3040	.0030 / 76	.0040 / 102	.0015 / 38	.0015 / 38	.0050 / 127	.0065 / 165	.0200 / 508	.0180 / 457	.0180 / 457	
	2020	.0020 / 51	.0020 / 51	.0015 / 38	.0010 / 25	.0040 / 102	.0065 / 165	.0150 / 381	.0140 / 356	.0120 / 305	
	2025	.0020 / 51	.0025 / 64	.0015 / 38	.0010 / 25	.0040 / 102	.0065 / 165	.0150 / 381	.0140 / 356	.0140 / 356	
	2030	.0020 / 51	.0030 / 76	.0015 / 38	.0010 / 25	.0040 / 102	.0065 / 165	.0150 / 381	.0140 / 356	.0140 / 356	
1002B	2515	.0025 / 64	.0015 / 38	.0015 / 38	.0010 / 25	.0040 / 102	.0065 / 165	.0150 / 381	.0140 / 356	.0120 / 305	.0010 / 25 through .0015 / 38
	2520	.0025 / 64	.0020 / 51	.0015 / 38	.0010 / 25	.0040 / 102	.0065 / 165	.0150 / 381	.0140 / 356	.0120 / 305	
1110B	2525	.0025 / 64	.0025 / 64	.0015 / 38	.0010 / 25	.0050 / 127	.0065 / 165	.0150 / 381	.0140 / 356	.0140 / 356	.0015 / 38
	2530	.0025 / 64	.0030 / 76	.0015 / 38	.0010 / 25	.0050 / 127	.0065 / 165	.0200 / 508	.0140 / 356	.0140 / 356	

STANDARD BONDING TOOLS - GENERAL GUIDELINES ON HOW TO ORDER

STYLE		FEED ANGLE
1001	STANDARD 10° BACK	30°
1002		45°
1110		60°

MATERIAL	HOLE / BOND FLAT	TOOL LENGTH (TL)
C	Will rely on specific application requirements (wire diameter used, bond pad size) – see dimension Table * For Oval Hole options please specify HH (Hole Height) & HW (Hole Width)	S = .437 / 11.1 mm
TI		¾ = .750 / 19.05 mm
W		L = .828 / 21.0 mm 1.00 = 1.00 / 25.4 mm Longer lengths are available consult Bonder manufacturer for specifications.

FOOT OPTIONS	
Concave (Standard) The Concave Depth (CD) is typically 10 to 15% of the usable wire diameter. There are small side flats on the edges to reduce edge chipping and minimize tool marks on the bond pad if the wire is missing.	
C	The FR and BR are polished. A fine matte finish within the area of the BF (Most Commonly Specified)
CM	The FR, BR and BF are matte.
CGM	Cross Groove foot design with FR, BR, and BF matte (for <i>Gold Wire</i>). Not recommended for BF smaller than .0020"/50µm
Flat (Optional)	
F	The FR and BR are polished. A fine matte finish within the area of the BF.
FM	The FR, BR and BF are matte. Special foot options are available. Consult the factory for recommended dimensions for special foot options.

HOW TO ORDER	
SPECIFY	Style – Material – Hole/Bond Flat – Tool Length – Foot Option (For modifications to standard tools, use part number and specify modified dimensions) or contact our technical support staff for assistance with your requirements. For Special Shank Style refer to page 61.
EXAMPLE	1001A-W-2525-L-C 1001B-W-2530-S-C