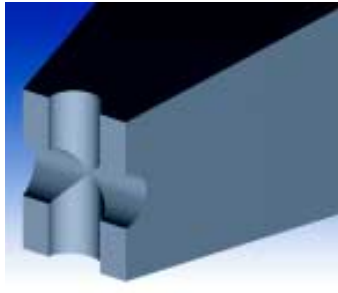
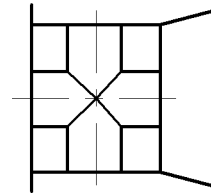
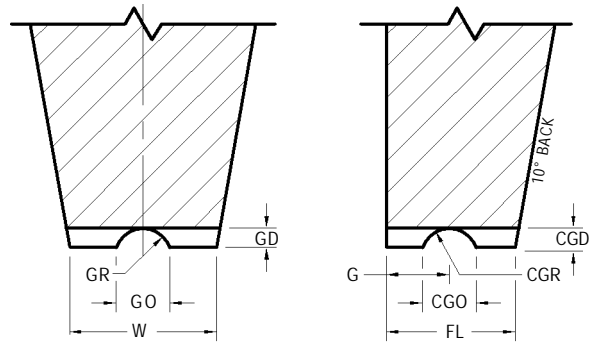


SPECIAL BONDING TOOLS



**XGR INSULATED WIRE
BONDING WEDGE**



STANDARD DIMENSIONS

| Tool Styles | Foot Length FL | Foot Width W | Groove Depth Cross Groove Depth | Groove Radius Cross Groove Radius | Groove Opening Cross Groove Opening | Useable Wire Diameter WD |
|-------------|-------------------------------------|-------------------------------------|---|---|---|--------------------------------|
| | in / μm $\pm .0002/5$ | in / μm $\pm .0002/5$ | GD / CGD in / μm $\pm .0001/3$ | GR / CGR in / μm (Ref) | GO / CGO in / μm $\pm .0002/5$ | |
| XGR | .0035 / 89 | .0040 / 102 | .0005 / 13 | .0006 / 15 | .0012 / 30 | .0010 / 25 |
| XGR | .0030 / 76 | .0035 / 89 | .0005 / 13 | .0006 / 15 | .0012 / 30 | .0010 / 25 |
| XGR | .0035 / 89 | .0040 / 102 | .0005 / 13 | .0008 / 20 | .0015 / 38 | .0010 / 25 |
| XGR | .0030 / 76 | .0035 / 89 | .0005 / 13 | .0008 / 20 | .0015 / 38 | .0010 / 25 |
| XGR | .0045 / 114 | .0055 / 140 | .0008 / 20 | .0010 / 25 | .0020 / 51 | .0015 / 38 |
| XGR | .0055 / 140 | .0060 / 152 | .0008 / 20 | .0010 / 25 | .0020 / 51 | .0015 / 38 |
| XGR | .0055 / 140 | .0060 / 152 | .0008 / 20 | .0012 / 30 | .0023 / 58 | .0015 / 38 |
| XGR | .0045 / 114 | .0055 / 140 | .0008 / 20 | .0012 / 30 | .0023 / 58 | .0015 / 38 |
| XGR | .0060 / 152 | .0070 / 178 | .0010 / 25 | .0012 / 30 | .0024 / 61 | .0020 / 51 |
| XGR | .0070 / 178 | .0080 / 230 | .0010 / 25 | .0012 / 30 | .0024 / 61 | .0020 / 51 |
| XGR | .0060 / 152 | .0070 / 178 | .0010 / 25 | .0015 / 38 | .0028 / 71 | .0020 / 51 |
| XGR | .0070 / 178 | .0080 / 203 | .0010 / 25 | .0015 / 38 | .0028 / 71 | .0020 / 51 |

SPECIAL BONDING TOOLS - GENERAL GUIDELINES ON HOW TO ORDER

| STYLE | |
|------------|---|
| XGR | INSULATED WIRE BONDING WEDGE STANDARD 10° BACK |

| | MATERIAL | FOOT LENGTH | TOOL LENGTH (TL) |
|-----------|---|--|--|
| TI | Titanium Carbide Composite for Gold Wire | Will rely on specific application requirements (wire diameter used, bond pad size) – see dimension Table | S = .437 / 11.1 mm |
| W | Tungsten Carbide Ultra Fine Grain for Aluminum Wire | | $\frac{3}{4}$ = .750 / 19.05 mm L = .828 / 21.0 mm 1.00 = 1.00 / 25.4 mm Longer lengths are available consult Bonder manufacturer for specifications. |

| FOOT OPTIONS | |
|--------------|---------------------|
| M | Matte finish on tip |

| HOW TO ORDER | |
|----------------|---|
| SPECIFY | Style – Material – Tool Diameter – Tool Length – Foot Design (Specify FL, W, GD, CGD, GR and CGR dimensions) For Special Shank Style refer to page 61. |
| EXAMPLE | XGR – W – 1/16 – L - M FL=.0055, W = .0060, GD = CGD = .0008, GR = CGR = .0010 |