



# SnoPen™

Precision Spray Cleaning Pen (SP 2000)



## FEATURES

The SnoPen™ CO<sub>2</sub> composite spray cleaning pen is an economical yet versatile precision spot cleaning solution for critical manufacturing and assembly operations. Using a patented process, the SnoPen generates and propels an adjustable (temperature and particle concentration) spray of clean dry air (CDA) or GN<sub>2</sub> containing CO<sub>2</sub> particles to efficiently remove foreign matter from a surface. The SnoPen replaces or augments conventional solvent-aided wiper, swab and spray cleaning techniques which can spread, smear or shed, or redeposit trace residues and particles over critical surfaces.

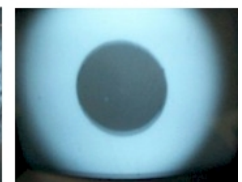
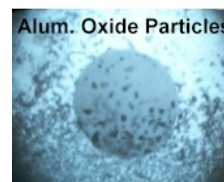
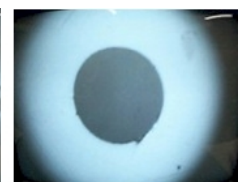
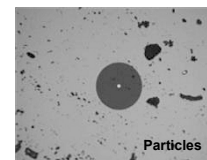
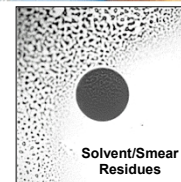
CO<sub>2</sub> particles are precisely projected at near-sonic velocity onto critical surfaces to provide selective cleaning for a variety of applications. For example, lenses, fiberoptics, electro-optics, sensors, medical devices, aerospace devices and HDD devices require precision cleaning in preparation for, during and/or following mechanical assembly, polishing, gross cleaning, adhesive bonding, welding, coating, inspection and test, among many other manufacturing operations. Contaminants such as microabrasive debris, cutting/splicing debris, polishing compounds, dust particles, fingerprints, surface films and other residues are efficiently scoured and scrubbed from critical surfaces using the SnoPen.

Each SnoPen is equipped with a flexible coaxial hose and spray pen applicator with electronic finger-switch and is expandable with a number of equipment options and accessories.

**TECH SPEC**

## Spray Cleaning Tool

- ✓ More economical and versatile than “Snow Guns”
- ✓ Quickly removes particles and thin film surface contaminants
- ✓ Superior to solvent wiping techniques
- ✓ Expandable with various upgrades and accessories



1-661-257-7667

[www.cleanlogix.com](http://www.cleanlogix.com)

## PRODUCT SPECIFICATIONS

### SnoPen™ – Precision Spray Cleaning Pen

Model SP2000

#### Basic Plug-n-Spray Cleaning System Includes:

**1. CO<sub>2</sub> Composite Spray Generator:** A compact table-top chassis equipped with power switch, CDA propellant thrust controller (0-125 psi) and gage, and precision CO<sub>2</sub> injection flow and temperature controller.

Internal:

**Particle Capillary:** Size 30 (fine) installed; Size 20 (ultrafine) and Size 40 (medium) available.

**Fluid Filtration:** 0.5 micron (standard).

**Spray Applicator:** Pencil pendant, 3 foot (1 meter) coaxial cleaning spray line, pencil applicator and nozzle.

**Propellant Temperature Controller:** Panel-mounted digital temperature controller.

**Spray Actuator:** Dual footswitch.

**2. Connection Kit:** Tank adaptor, hose, and filter for a 20 or 50 pound liquid CO<sub>2</sub> cylinder.

**3. Operation Manual.**



Optional ProBlast™ Cabinet and CoolVac™ HEPA Extraction System

## SPECIFICATIONS (Model SP2000)

<b>Voltage Requirements</b>	110V – 50/60 Hz (other voltages available)
<b>Cleaning Agent Supply</b>	Liquid CO <sub>2</sub> , 830-950 psi, 50-75 °F
<b>Propellant Supply</b>	GN <sub>2</sub> , CDA Gas, 60-150 psi
<b>Spray Control</b>	24VDC Finger Switch
<b>Maximum Environmental Operating Temperature</b>	80 °F
<b>Workspace (Spray Generator)</b>	11.5D x 14.0W x 5.5H in <sup>3</sup>

## EQUIPMENT FOR GENERATING LOW-COST, HIGH-QUALITY CO<sub>2</sub>!

PurCO<sub>2</sub>™ Pure Liquid CO<sub>2</sub> Generator

### OPTIONAL ACCESSORIES

- **ProBlast™** Lighted, Ionized Glove Box
- **CoolVac™** HEPA Contamination Collection System
- **BlueFire™** Atmospheric Plasma Treatment System

SnoPen™





*Another clean idea...*

**CLEANLOGIX**  
Think **Clean.**

27636 N. Ave. Scott Unit C  
Valencia, California 91355  
(661) 257-7667  
[www.cleanlogix.com](http://www.cleanlogix.com)

© Cleanlogix LLC  
All Rights Reserved  
Patented and Patents-Pending

Cleanlogix Tech Spec SnoPen 2000.PDF

**SnoPen™**