

# The AccuFlo<sup>®</sup>

## MICRO-ABRASIVE BLASTER

with SIMOOM<sup>®</sup> TECHNOLOGY



### When You Need More Than the MicroBlaster<sup>®</sup>

The AccuFlo<sup>®</sup> is the first micro-abrasive blaster to be equipped with the patented Simoom<sup>®</sup> Technology – a redesigned modulator, aerodynamic tank and PowderGate<sup>®</sup> valve. The added flexibility and enhanced powder flow control allow a wider range of applications to be performed with the unit.

**COMCO INC.**  
800-796-6626

# What Is Microblasting?

Micro-abrasive blasting is a straightforward, cost-efficient and environmentally-friendly way to perform a variety of surface treatments.

Derived from sandblasting, microblasting mixes fine abrasive with dry air, which is then propelled through a small nozzle.

## How AccuFlo Helps

Microblasting technology is being used in an increasing number of critical applications by a broad and growing group of industries: medical manufacturing, aerospace, micro-electronics, dental, fossil, and precision machining.

## Where AccuFlo Helps

Its advanced features and operational flexibility make the AccuFlo the perfect choice for:

- deburring all types of precision parts
- trimming epoxy from probe rings
- deinvesting dental crowns
- cleaning connectors
- refurbishing turbine blades
- deburring cannulae
- demarking
- texturing for improved bond adhesion
- conditioning stent surfaces
- removing MgO from thermocouples
- performing surface treatments on pacemakers



# An Engineering Breakthrough

The introduction of the AccuFlo coincides with the 40th anniversary of Comco, and the model represents everything we have learned since we opened our doors. Customers using MicroBlaster® models expressed a growing need for some of the advanced features of the DirectFlo™ and PowerFlo® so Comco engineers set about finding a way to integrate those features into a new product.

The new AccuFlo comes equipped with the exclusive PowderGate® valve. This mechanism uses the latest technology to control the on/off action of the abrasive. It increases the responsiveness of the unit and reduces downtime by eliminating maintenance issues found on conventional blasters that use pinch mechanisms.

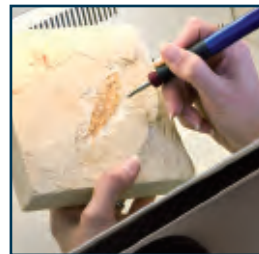
## The AccuFlo® is ideal for many applications, including:



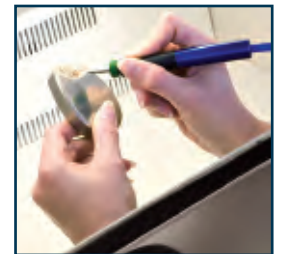
**Epoxy removal from probe rings**



**Oxide removal from turbine blades**



**Fossil preparation**



**Pacemaker cleaning**

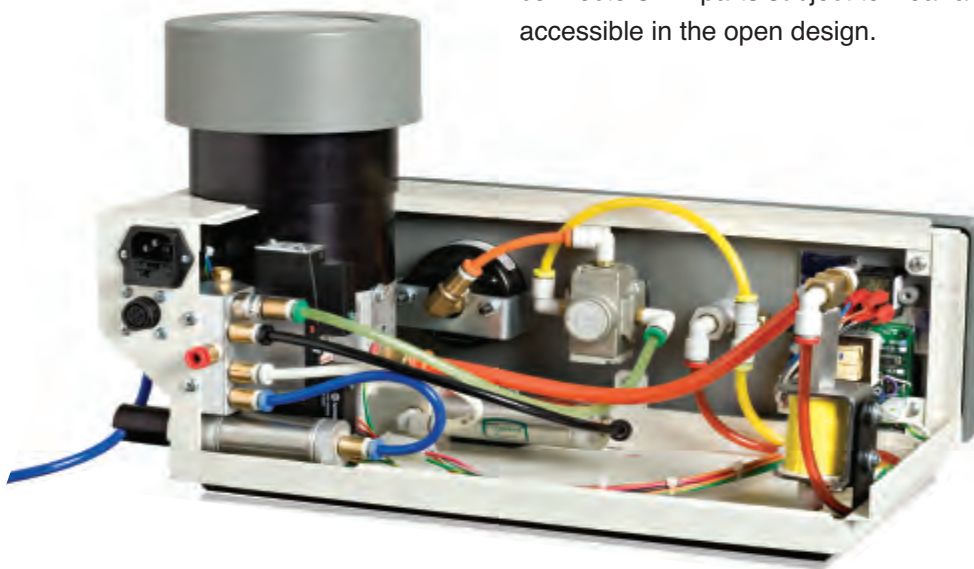
## Simoom® Technology

Comco's patented Simoom® Technology is named after a strong, dust-laden wind that blows in the desert. In the AccuFlo, it describes the means by which the redesigned modulator, media tank and mixing chamber provide a more efficient process of mixing the air and abrasive. Along with the easy-to-change bypass tube and powder flow control regulator, this process delivers better control over the abrasive stream than other blasters.

With Simoom Technology it is possible to flow a wider range of abrasive size. The additional control inherent in this technology also allows for a wider range of powder flow, using easily replaced bypass tubes. The powder flow control regulator is then used for "fine-tuning." Flowing higher concentrations of powder improves the abrading power, decreasing processing time.

## Specially Designed Media Tank

The media tank has a transparent cover for easy checking of the powder level. A special thread design on the tank cover makes for quick removal and replacement when it's time to add/change powder – and it holds 50% more than a standard MicroBlaster.



## ComfortGrip® Handpiece

The ComfortGrip® handpiece has been ergonomically designed to provide extra comfort and lessen operator fatigue. It has fewer wear points and is engineered for easy replacement of its exclusive Hi/Performance™ nozzles. These special nozzles offer greater precision and longer life than conventional ones.

## Easy Maintenance



Easy-to-read LCD counters keep track of blast cycles and hours of use, providing simple milestones for maintenance – which is simplified by the unit's color-coded air lines and

connectors. All parts subject to wear are easily accessible in the open design.

# The AccuFlo®

# Dedication to Quality

Comco incorporates numerous patented and patent-pending features in every MicroBlaster model, and builds every unit in the United States with an uncompromising dedication to quality. We also continue to refine and improve each and every component, as well as develop new products – new solutions – to address changing customer needs.

Forty years ago, the first award-winning MicroBlaster model exemplified Comco's commitment to innovation and engineering expertise. These are the qualities that have kept us at the forefront of microblasting technology from 1968 to today, and that drove the development of our latest customer solution, the AccuFlo.

## Comco Systems Approach

For a complete, installed solution, Comco recommends a workstation, air dryer and dust collector in addition to a blaster. The most efficient and effective installation will be one in which all of these components work as a system, offering a straightforward solution to your micro-abrasion needs.

## Comco Applications Lab

Comco's Applications Engineers have the expertise – and the complete, calibrated test facilities – to determine if a micro-abrasive blasting process can improve your production efficiency and product quality. They can then develop a unique, customized solution to your precise specifications.

**Contact us today at 800-796-6626  
and discover the MicroBlasting  
solution to your production problems!**



### AccuFlo® AF10 Specifications

Model:	AccuFlo AF10 Standard Tank	AccuFlo AF10-T Extended Tank
Shipping Wt:	30 lb. (13.6 kg)	30 lb. (13.6 kg)
Height:	10.5 in. (26.7 cm)	15.0 in. (38.1 cm)
Width:	17.5 in. (44.5 cm)	17.5 in. (44.5 cm)
Depth:	10.0 in. (25.4 cm)	10.0 in. (25.4 cm)
Air Pressure:	10 - 125 psi. (0.7 - 8.6 bar)	10 - 125 psi. (0.7 - 8.6 bar)
Powder Capacity:	1 liter	2 liters
Nozzle Sizes:	Round .015 - .060 in. diameter (.38 mm - 1.5 mm) Other shapes and sizes available	

### Facility Requirements

Inlet Air Pressure:	70-145 psi. (4.8 - 10 bar)
Air Volume:	Depending on nozzle size and air pressure, consumption is typically 0.2 - 4.6 SCFM (94 - 2170 cm <sup>3</sup> / sec.)
Air Supply Quality:	Dried to -25°F dew point (<200 ppm of moisture) and oil content filtered to <10 ppm
Power Requirements:	115V 50Hz/60Hz, 40 Watts 230V 50Hz/60Hz, 40 Watts

All AccuFlo models come with a one-year warranty. High pressure and CE compliant models are available. Consult your Comco representative for details.

**Comco Inc.** 2151 North Lincoln Street / Burbank, CA 91504-3344, USA  
818-841-5500 / Fax: 818-955-8365 / [sales@COMCOinc.com](mailto:sales@COMCOinc.com)

Visit us at [www.COMCOinc.com](http://www.COMCOinc.com)