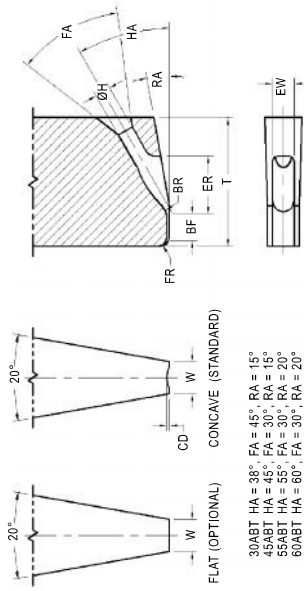
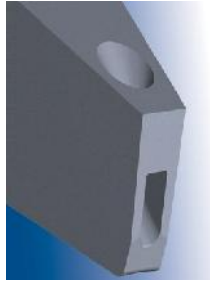


The ABT design is the most widely used and recommended tool design for automatic, manual with automatic retrofit and manual ultrasonic wedge bonders due to its highly Accurate bond placement capability.

The back radius area is rounded which keeps the wire in the center of the tool. The lower back heel area of 38° produces a strong first bond transition.



STANDARD DIMENSIONS									
Tool Styles	Wire Feed Angle	Hole/Bond Flat	Hole H in / μm ±.0002/5	Bond Flat BF in / μm ±.0002/5	Front Radius FR in / μm ±.0001/3	Back Radius BR in / μm ±.0001/3	Foot Width W in / μm ±.0002/5	Tip Thickness T in / μm ±.0005/13	Usable Wire Diameter in / μm
30ABT	38°	2015	.0020 / 51	-.0015 / 38	.0010 / 25	.0010 / 25	.0040 / 102	.0140 / 356	.0007 / 18 through .0013 / 33
		2020	.0020 / 51	-.0020 / 51	.0010 / 25	.0010 / 25	.0040 / 102	.0140 / 356	
		2025	.0020 / 51	-.0025 / 64	.0010 / 25	.0010 / 25	.0040 / 102	.0140 / 356	
		2030	.0020 / 51	-.0030 / 76	.0010 / 25	.0010 / 25	.0040 / 102	.0140 / 356	
45ABT	45°	2520	.0025 / 64	-.0020 / 51	.0010 / 25	.0010 / 25	.0040 / 102	.0140 / 356	.0010 / 25 through .0015 / 38
		2525	.0025 / 64	-.0025 / 64	.0010 / 25	.0010 / 25	.0040 / 102	.0140 / 356	
		2530	.0025 / 64	-.0030 / 76	.0010 / 25	.0010 / 25	.0040 / 102	.0140 / 356	
		2535	.0025 / 64	-.0035 / 89	.0010 / 25	.0010 / 25	.0040 / 102	.0150 / 381	
2540	.0025 / 64	-.0040 / 102	.0010 / 25	.0010 / 25	.0040 / 102	.0150 / 381			
30ABT	38°	3020	.0030 / 76	-.0020 / 51	.0010 / 25	.0010 / 25	.0050 / 127	.020 / 508	
		3025	.0030 / 76	-.0025 / 64	.0010 / 25	.0010 / 25	.0050 / 127	.020 / 508	
		3030	.0030 / 76	-.0030 / 76	.0010 / 25	.0010 / 25	.0050 / 127	.020 / 508	
		3035	.0030 / 76	-.0035 / 89	.0010 / 25	.0010 / 25	.0050 / 127	.020 / 508	
3040	.0030 / 76	-.0040 / 102	.0010 / 25	.0010 / 25	.0050 / 127	.020 / 508	.0015 / 38 through .0020 / 51		
45ABT	45°	3020	.0030 / 76	-.0020 / 51	.0010 / 25	.0010 / 25	.0050 / 127	.0180 / 457	
		3025	.0030 / 76	-.0025 / 64	.0010 / 25	.0010 / 25	.0050 / 127	.0180 / 457	
		3030	.0030 / 76	-.0030 / 76	.0010 / 25	.0010 / 25	.0050 / 127	.0180 / 457	
60ABT	60°	3035	.0030 / 76	-.0035 / 89	.0010 / 25	.0010 / 25	.0050 / 127	.0180 / 457	
3040	.0030 / 76	-.0040 / 102	.0010 / 25	.0010 / 25	.0050 / 127	.0180 / 457			

STYLE		FEED ANGLE			
ABT	AUTO BONDING TOOL	38°, 45°, 55°, 60°			
MATERIAL		HOLE / BOND FLAT		TOOL LENGTH (TL)	
C	Cermet composite for Gold Wire (recommended for Low Temperature bonding)	Will rely on specific application requirements (wire diameter used, bond pad size) – see dimension Table		S = .437 / 11.1 mm ¼ = .750 / 19.05 mm L = .828 / 21.0 mm 1.00 = 1.00 / 25.4 mm Longer lengths are available consult Bonder manufacturer for specifications.	
M	Microloy (Osmium-Carbide Alloy) for Gold & Aluminum Wire	* For Oval Hole options please specify HH (Hole Height) & HW (Hole Width)			
TI	Titanium Carbide Composite for Gold Wire				
W	Tungsten Carbide Ultra Fine Grain for Aluminum Wire				
FOOT OPTIONS					
C	Concave foot design with polished FR and BR with matte finish on BF (matte most commonly used with Aluminum wire) for best results specify when the BF is greater than .0015/38μm.				
CM	Concave foot design with FR, BR and BF matte (for Aluminum and Gold wire)				
Flat (Optional)					
F	The FR and BR are polished. A fine matte finish is within the area of the BF.				
FM	Cross Groove with FR and BR matte (for Gold Wire) with a matte Flat BF. Most commonly used on manual and semi automatic bonders where pad size restrictions is not an issue. Not recommended for BF smaller than .0020"/50μm				
CGM	Cross Groove with FR and BR matte (for Gold Wire) with a Concave used on automatic bonders where wire control is critical and pad size is limited. Not recommended for BF smaller than .0020"/50μm				
CCM	Cross Groove with FR and BR matte (for Gold Wire) with a Concave used on automatic bonders where wire control is critical and pad size is limited. Not recommended for BF smaller than .0020"/50μm				
HOW TO ORDER					
SPECIFY	Style – Material – Hole/Bond Flat – Tool Length – Foot Option (For modifications to standard tools, use part number and specify modified dimensions) or contact our technical support staff for assistance with your requirements. For Special Shank Style refer to page 61.				
EXAMPLE	30ABT - W - 2520 - L - CM 180 - DEG - REV (For DIAS Wire Bonder or K&S 8060) 45ABT - TI - 2020 - ¼ - CGM				