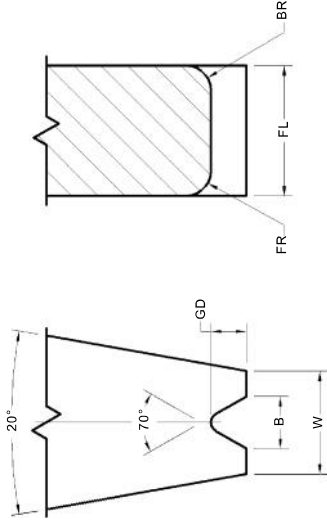
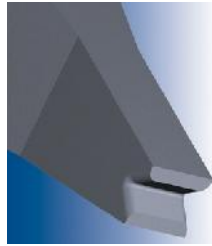


CKVD STYLE



Tool Style(s) - Wire Size	Useable Wire Diameter WD in / $\mu$ m	Foot Length FL in / $\mu$ m $\pm .0003/8$	Front/Back Radius FR = BR in / $\mu$ m (Ref)	Foot Width W in / $\mu$ m $\pm .0003/8$	Groove Depth GD in / $\mu$ m Min	Groove Opening B in / $\mu$ m $\pm .0003/8$	Relief E in / $\mu$ m $\pm .0039/100$
CKVD-100	.0040 / 100	.0098 / 250	.0012 / 30	.0079 / 200	.0028 / 71	.0043 / 109	.0390 / 1000
CKVD-125	.0050 / 125	.0118 / 300	.0015 / 38	.0098 / 250	.0035 / 89	.0054 / 137	.0390 / 1000
CKVD-150	.0060 / 150	.0138 / 350	.0018 / 45	.0118 / 300	.0042 / 107	.0065 / 165	.0390 / 1000
CKVD-175	.0070 / 175	.0157 / 400	.0021 / 53	.0138 / 350	.0049 / 124	.0076 / 193	.0390 / 1000
CKVD-200	.0080 / 200	.0177 / 450	.0024 / 61	.0157 / 400	.0056 / 142	.0087 / 221	.0390 / 1000
			(Ref)	$\pm .0005/13$	Min	$\pm .0005/13$	$\pm .0039/100$
CKVD-250	.0100 / 250	.0217 / 551	.0030 / 76	.0197 / 500	.0070 / 178	.0108 / 274	.0590 / 1500
CKVD-300	.0120 / 300	.0256 / 650	.0035 / 89	.0236 / 600	.0084 / 213	.0130 / 330	.0590 / 1500
CKVD-350	.0140 / 350	.0299 / 760	.0041 / 104	.0276 / 700	.0088 / 249	.0152 / 386	.0590 / 1500
CKVD-380	.0150 / 380	.0323 / 820	.0045 / 114	.0299 / 760	.0106 / 269	.0165 / 419	.0590 / 1500
CKVD-400	.0160 / 400	.0343 / 871	.0047 / 119	.0315 / 800	.0112 / 284	.0173 / 439	.0590 / 1500
CKVD-500	.0200 / 500	.0433 / 110	.0059 / 150	.0384 / 1000	.0140 / 356	.0217 / 551	.0590 / 1500

STYLE		WIRE SIZE		MATERIAL	
CKVD : 70° Deep "V" Groove		Specify Wire Size		W : Tungsten Carbide Ultra Fine Grain for Aluminum Wire	
Tool Dia	TD in / mm $\pm .0001/3\mu$ m	TDF in / mm $\pm .0005/13\mu$ m	Specified Length	TL in / mm $\pm .005/130\mu$ m	
1/16	.0624 / 1.585	.0570 / 1.448*	L	.828 / 21.0	
1/8	.1249 / 3.172	.0937 / 2.378***	1.00	1.000 / 25.4	
2mm	.0785 / 1.995 @	.0630 / 1.600*	20mm	.787 / 20.0	
3mm	.1180 / 2.997	.0985 / 2.502**	29mm	1.142 / 29.0	
NOTE					
Length 29mm for Deep Access limited size availability.					
* .110" / 2.79mm TDF supplied if required by foot geometry.					
** .1180" / 3.00mm TDF supplied if required by foot geometry.					
@ Tolerance +0 / - .0002" / 5 $\mu$ m					
FOOT OPTIONS					
G	The FR and BR are polished and a fine matte finish is within the area of the groove. (Standard)				
GM	The FR, BR and groove have a matte finish				
HOW TO ORDER					
SPECIFY	<b>Style - Wire - Material - Tool Diameter - Tool Length - Foot Option</b> (For modifications to standard tools, use part number and specify modified dimensions or contact our technical support staff for assistance with your requirements). For Shank Style refer to page 62.				
EXAMPLE	CKVD - 250 - W - 2mm - 29mm - G				