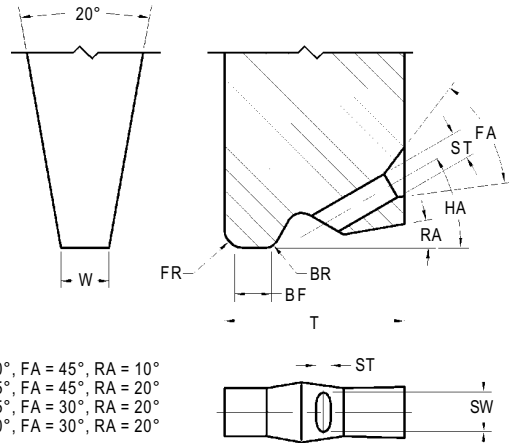
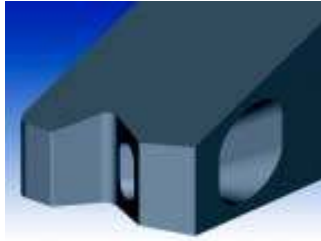


# RIBBON WIRE BONDING TOOLS



RW30 HA = 30°, FA = 45°, RA = 10°  
 RW45 HA = 45°, FA = 45°, RA = 20°  
 RW55 HA = 55°, FA = 30°, RA = 20°  
 RW60 HA = 60°, FA = 30°, RA = 20°

## STANDARD DIMENSIONS

Tool Styles	Slot Width/ Bond Flat SW / BF	Ribbon Width RW	Ribbon Thickness RT	Slot Width SW	Slot Thickness ST	Bond Foot BF	Foot Width W	Clearance 30° & 45° Slots C	Clearance 55° Slots C	Tip Thickness	Tip Thickness	Tip Thickness
										30° Slots T	45° Slots T	55°/60° Slots T
		in / μm Ref	in / μm Ref	in / μm ±.0003/8	in / μm ±.0003/8	in / μm ±.0002/5	in / μm ±.0002/5	in / μm Ref	in / μm Ref	in / μm ±.0005/13	in / μm ±.0005/13	in / μm ±.0005/13
	0420*	.0020 / 51	.0005/13	.0040 / 102	.0025 / 64	.0020 / 51	.0055 / 140	.0020 / 51	.0030 / 76	.0160 / 406	.0140 / 356	.0120 / 305
	0425	.0020 / 51	to	.0040 / 102	.0025 / 64	.0020 / 51	.0055 / 140	.0020 / 51	.0030 / 76	.0160 / 406	.0140 / 356	.0120 / 305
	0430	.0020 / 51	.0010/25	.0040 / 102	.0025 / 64	.0020 / 51	.0055 / 140	.0020 / 51	.0030 / 76	.0160 / 406	.0140 / 356	.0120 / 305
	0520	.0030 / 76		.0050 / 127	.0025 / 64	.0020 / 51	.0065 / 165	.0020 / 51	.0030 / 76	.0160 / 406	.0140 / 356	.0120 / 305
	0525*	.0030 / 76		.0050 / 127	.0025 / 64	.0025 / 64	.0065 / 165	.0020 / 51	.0030 / 76	.0160 / 406	.0140 / 356	.0120 / 305
	0530	.0030 / 76		.0050 / 127	.0025 / 64	.0030 / 76	.0065 / 165	.0020 / 51	.0030 / 76	.0180 / 457	.0150 / 381	.0140 / 356
	0540	.0030 / 76	.0005/13	.0050 / 127	.0025 / 64	.0040 / 102	.0065 / 165	.0020 / 51	.0030 / 76	.0180 / 457	.0150 / 381	.0140 / 356
	0620	.0040 / 102	to	.0060 / 152	.0025 / 64	.0020 / 51	.0075 / 191	.0020 / 51	.0030 / 76	.0160 / 406	.0140 / 356	.0120 / 305
	0625	.0040 / 102	.0010/25	.0060 / 152	.0025 / 64	.0025 / 64	.0075 / 191	.0020 / 51	.0030 / 76	.0160 / 406	.0140 / 356	.0120 / 305
	0630*	.0040 / 102		.0060 / 152	.0025 / 64	.0030 / 76	.0075 / 191	.0020 / 51	.0030 / 76	.0160 / 406	.0150 / 381	.0140 / 356
	0640	.0040 / 102		.0060 / 152	.0025 / 64	.0040 / 102	.0075 / 191	.0020 / 51	.0030 / 76	.0160 / 406	.0150 / 381	.0140 / 356
	0725	.0050 / 127		.0070 / 178	.0030 / 76	.0025 / 64	.0085 / 216	.0025 / 64	.0040 / 102	.0210 / 533	.0180 / 457	.0140 / 356
	0730	.0050 / 127		.0070 / 178	.0030 / 76	.0030 / 76	.0085 / 216	.0025 / 64	.0040 / 102	.0210 / 533	.0180 / 457	.0140 / 356
	0740	.0050 / 127	.0005/13	.0070 / 178	.0030 / 76	.0040 / 102	.0085 / 216	.0025 / 64	.0040 / 102	.0210 / 533	.0180 / 457	.1060 / 406
	0750	.0050 / 127	to	.0070 / 178	.0030 / 76	.0050 / 127	.0085 / 216	.0025 / 64	.0040 / 102	.0210 / 533	.0180 / 457	.0160 / 406
	1125	.0070 / 178	.0020/51	.0110 / 279	.0030 / 76	.0025 / 64	.0125 / 318	.0025 / 64	.0040 / 102	.0210 / 533	.0180 / 457	.0160 / 406
	1130	.0070 / 178		.0110 / 279	.0030 / 76	.0030 / 76	.0125 / 318	.0025 / 64	.0040 / 102	.0210 / 533	.0180 / 457	.0160 / 406
	1140*	.0070 / 178		.0110 / 279	.0030 / 76	.0040 / 102	.0125 / 318	.0025 / 64	.0040 / 102	.0210 / 533	.0180 / 457	.0160 / 406
	SW / BF	Ref	Ref	±.0005/13	±.0003/8	±.0002/5	±.0005/13	Ref	Ref	±.0005/13	±.0005/13	±.0005/13
	1425	.0100 / 254		.0140 / 356	.0030 / 76	.0025 / 64	.0155 / 394	.0025 / 64	.0040 / 102	.0210 / 533	.0180 / 457	.0140 / 356
	1430	.0100 / 254		.0140 / 356	.0030 / 76	.0030 / 76	.0155 / 394	.0025 / 64	.0040 / 102	.0210 / 533	.0180 / 457	.0140 / 356
	1440	.0100 / 254		.0140 / 356	.0030 / 76	.0040 / 102	.0155 / 394	.0025 / 64	.0040 / 102	.0210 / 533	.0180 / 457	.0140 / 356
	1625	.0120 / 305		.0160 / 406	.0030 / 76	.0025 / 64	.0175 / 445	.0025 / 64	.0040 / 102	.0210 / 533	.0180 / 457	.0140 / 356
	1630	.0120 / 305		.0160 / 406	.0030 / 76	.0030 / 76	.0175 / 445	.0025 / 64	.0040 / 102	.0210 / 533	.0180 / 457	.0140 / 356
	1640*	.0120 / 305	.0005/13	.0160 / 406	.0030 / 76	.0040 / 102	.0175 / 445	.0025 / 64	.0040 / 102	.0210 / 533	.0180 / 457	.0160 / 406
	1650	.0120 / 305	to	.0160 / 406	.0030 / 76	.0050 / 127	.0175 / 445	.0025 / 64	.0040 / 102	.0210 / 533	.0180 / 457	.0160 / 406
	1925	.0150 / 381	.0020/51	.0190 / 483	.0030 / 76	.0025 / 64	.0205 / 521	.0025 / 64	.0040 / 102	.0210 / 533	.0180 / 457	.0140 / 356
	1930	.0150 / 381		.0190 / 483	.0030 / 76	.0030 / 76	.0205 / 521	.0025 / 64	.0040 / 102	.0210 / 533	.0180 / 457	.0140 / 356
	1940*	.0150 / 381		.0190 / 483	.0030 / 76	.0040 / 102	.0205 / 521	.0025 / 64	.0040 / 102	.0210 / 533	.0180 / 457	.0160 / 406
	2425	.0200 / 508		.0240 / 610	.0030 / 76	.0025 / 64	.0255 / 648	.0025 / 64	.0040 / 102	.0210 / 533	.0180 / 457	.0140 / 356
	2430	.0200 / 508		.0240 / 610	.0030 / 76	.0030 / 76	.0255 / 648	.0025 / 64	.0040 / 102	.0210 / 533	.0180 / 457	.0140 / 356
	2440	.0200 / 508		.0240 / 610	.0030 / 76	.0040 / 102	.0255 / 648	.0025 / 64	.0040 / 102	.0210 / 533	.0180 / 457	.0160 / 406
	2450*	.0200 / 508		.0240 / 610	.0030 / 76	.0050 / 127	.0255 / 648	.0025 / 64	.0040 / 102	.0210 / 533	.0180 / 457	.0160 / 406

- \* Most commonly specified
- Standard FR and BR : FR = .0010" / 25μm and BR = .0003" / 8μm is standard.
- Max Ribbon size for a vertical shank (1/16) is .012" / 305μm ribbon.

## RIBBON WIRE TOOLS - GENERAL GUIDELINES ON HOW TO ORDER

STYLE		FEED ANGLE
RW = RIBBON WIRE	SLIMLINE BACK	30°, 45°, 55°, 60°

MATERIAL	HOLE / BOND FLAT	TOOL LENGTH (TL)
<b>C</b> Cermet composite for Gold Wire (recommended for Low Temperature bonding)	Will rely on specific application requirements (wire diameter used, bond pad size) – see dimension Table	S = .437 / 11.1 mm
<b>TI</b> Titanium Carbide Composite for Gold Wire		¾ = .750 / 19.05 mm
<b>W</b> Tungsten Carbide Ultra Fine Grain for Aluminum Wire		L = .828 / 21.0 mm 1.00 = 1.00 / 25.4 mm Longer lengths are available consult Bonder manufacturer for specifications.

FOOT OPTIONS	
<b>FM</b>	Flat foot design with the FR, BR and BF matte. (Standard)
<b>CGM</b>	Cross Groove with the FR and BR matte. Not recommended for BF smaller than .0020"/50µm

HOW TO ORDER	
<b>SPECIFY</b>	<b>Style – Material – Tool Diameter – Tool Length – Foot Design</b>
<b>EXAMPLE</b>	RW45 - TI - 1140 - 1/16 - L - CGM RW45 - TI - 0530 - 1/16 - L - FM

SMALL WIRE  
BONDING TOOLS