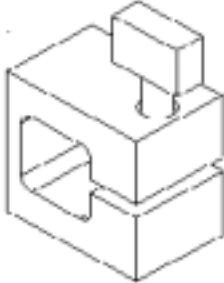


When collecting Energy Density readings, the PALM Probe has a built in timer to allow you to monitor the 'time component' of the Energy Density reading. Press SELECT in order to move to the Seconds display on the PALM Probe.

**Figure 9- PALM Probe
Locking Ring**

The Locking Ring slides over the Light Guide and allows the user to consistently place the PALM Probe at the same depth in the UV system for each reading. A Locking Ring is supplied standard with each PALM Probe.



**Figure 10- PALM Probe
Locator Kit**

The PALM Probe Locator Kit allows the Light Guide to be placed in the same location each time a measurement is made. The Locator Kit can be mounted in either an external or internal position on the housing based on the available space on in UV housing/system. The Locator Kit is available with or without a hinged door. In mounting locations where the UV light may be a hazard, the door protects the user from stray UV light. All Locator Kit Figures shown with the door.

(Also see Figures 11 -13).

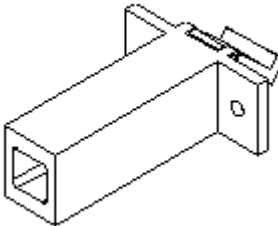
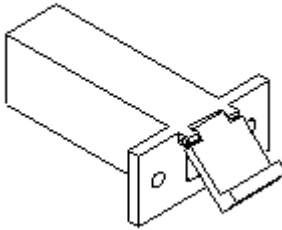


Figure 11-Locator Kit Template

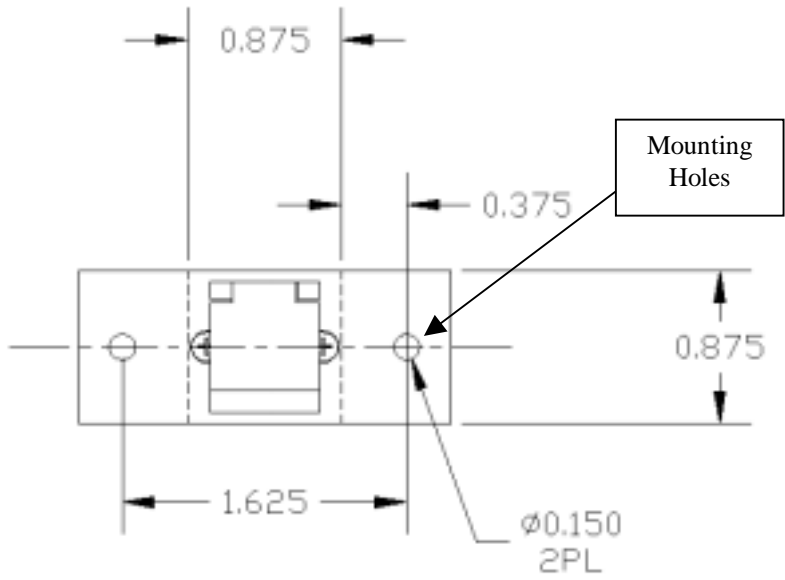


Figure 12-Locator Kit External Mount on UV System

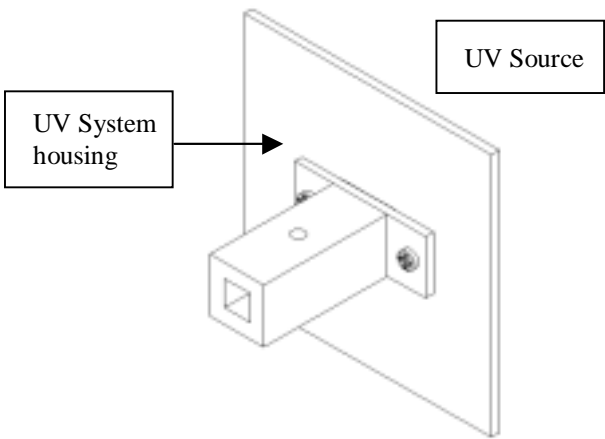


Figure 13-Locator Kit-Internal Mount on UV System

